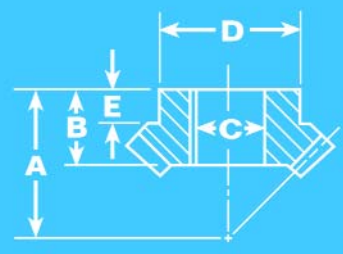
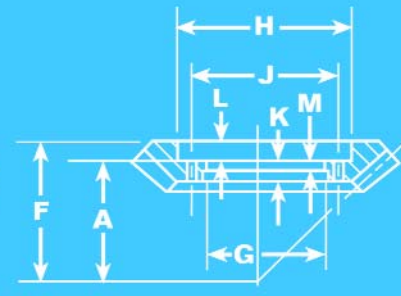
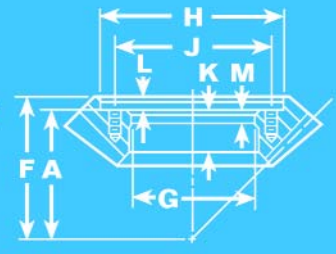

**Figure 1**

**Figure 2**

**Figure 3**

**Figure 4**

Part No.	18P18L18	18P18R18	12P18L18	12P18R18	10P20L20	10P20R20	8P20L20	8P20R20	7P21L21	7P21R21	6P21L21	6P21R21	6P24L24	6P24R24	5P25L25	5P25R25	45P27L27	45P27R27	4P28L28	4P28R28	4P32L32	4P32R32	35P35L35	35P35R35	3P36L36	3P36R36	257P36L36	257P36R36	225P36L36	225P36R36		
Figure	1	1	1	1	1	1	2	2	2	2	2	2	2	2	2	2	2	2	2	2	3	3	3	3	3	3	4	4	4	4		
<b>Gear</b>																																
<b>Outside Dia.</b>	1.061	1.571	2.086	2.590	3.100	3.665	4.100	5.172	6.201	7.238	8.202	10.262	12.304	14.372	16.430																	
<b>Pitch Dia.</b>	1.000	1.500	2.000	2.500	3.000	3.500	4.000	5.000	6.000	7.000	8.000	10.000	12.000	14.000	16.000																	
<b>Pinion</b>																																
<b>Outside Dia.</b>	1.061	1.571	2.086	2.590	3.100	3.665	4.100	5.172	6.201	7.238	8.202	10.262	12.304	14.372	16.430																	
<b>Pitch Dia.</b>	1.000	1.500	2.000	2.500	3.000	3.500	4.000	5.000	6.000	7.000	8.000	10.000	12.000	14.000	16.000																	
<b>Combination</b>	18   18	18   18	20   20	20   20	21   21	21   21	24   24	25   25	27   27	28   28	32   32	32   32	35   35	36   36	36   36	36   36	36   36	36   36	36   36	36   36	36   36	36   36	36   36	36   36	36   36	36   36	36   36	36   36	36   36			
<b>Diametral Pitch</b>	18	12	10	8	7	6	6	5	4½	4	4	3½	3	2.57	2.25																	
<b>Face Width</b>	3/16	5/16	1/2	9/16	11/16	13/16	1	13/16	15/16	1½	1½	17/8	2	2¾	3																	
<b>A Mount Dist.</b>	7/8	15/16	15/8	115/16	2¼	29/16	213/16	37/16	41/8	45/8	3¾	411/16	59/16	7½	8½																	
<b>B Bore Length</b>	15/32	11/16	7/8	1	1½	1¼	13/8	15/8	17/8	2																						
<b>C Bore Dia.</b> <sup>+0.005</sup> / <sub>-0.000</sub>	3/8	5/8	3/4	15/16	11/16	13/16	15/16	17/16	111/16	115/16																						
<b>D Hub Dia.</b>	3/4	1¼	1½	17/8	21/8	2½	2¾	3¼	35/8	4																						
<b>E Hub Length</b>	¼	7/16	3/8	7/16	½	9/16	9/16	9/16	¾	11/16																						
<b>F Apex to Back</b>											43/8	57/16	6½	8	9¼																	
<b>G Bore Dia.</b> <sup>+0.001</sup> / <sub>-0.000</sub>											3¾	5	6½	87/8	10½																	
<b>H C'bore Dia.</b>											5½	71/8	85/8	11¼	13																	
<b>J Bolt Circle</b>											45/8	6	7½	10	11¾																	
<b>K Web Thick.</b>											5/8	¾	¾	2	21/8																	
<b>L C'bore Depth</b>											5/8	¾	15/16	½	¾																	
<b>M Bore Length</b>											5/16	5/16	¾	1	½																	
<b>Holes</b>	<b>Size</b>																				13/32	17/32	17/32	17/32	17/32	17/32	17/32	17/32	17/32	17/32		
	<b>No.</b>																					12	12	12	12	12	12	12	12	12	12	
<b>Keyway</b>	1/8x1/16	3/16x1/16	3/16x1/16	1/4x3/32	1/4x3/32	1/4x3/32	3/8x1/8	3/8x1/8	3/8x1/8	1/2x3/16																						
<b>**Max. Bore</b>	*	*	7/8	13/16	17/16	111/16	17/8	2½	2¾	27/8	*	*	*	*	*																	
<b>Wt. per pair, lbs.</b>	.12	.40	.81	1.25	2.25	3.75	5.37	10.5	16.5	24.5	17.0	30.0	46.0	79.5	108.0																	
<b>Torque (lb. in.)</b>	37	138	405	712	1251	1936	2991	5218	7765	11481	14209	24433	38404	69158	95307																	

Note: All dimensions are in inches.

\*Cannot be reworked.

\*\*Keyway Unchanged