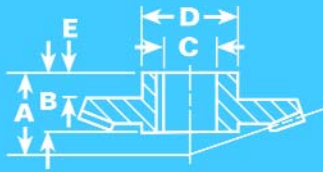
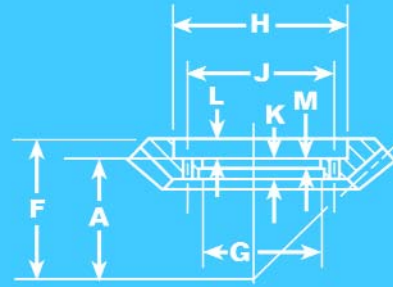

Figure 19

Figure 20

Figure 21

Part No.	8P28L21	8P21R28	7P28L21	7P21R28	6P32L24	6P24R32	5P32L24	5P24R32	4P32L24	4P24R32	35P36L27	35P27R36	3P36L27	3P27R36	
Figure	19	19	19	19	19	20	19	20	19	21	21	21	21	21	
Gear															
Outside Dia.	3.548		4.068		5.379		6.503		8.084		10.434		12.152		
Pitch Dia.	3.500		4.000		5.333		6.400		8.000		10.286		12.000		
Pinion															
Outside Dia.	2.789		3.186		4.219		5.053		6.288		8.117		9.424		
Pitch Dia.	2.625		3.000		4.000		4.800		6.000		7.714		9.000		
Combination	21	28	21	28	24	32	24	32	24	32	27	36	27	36	
Diametral Pitch	8		7		6		5		4		3½		3		
Face Width	1 ¹ / ₁₆		¾		1		1¼		1½		1¾		2		
A Mount Dist.	2¼	2⅛	2⅝	2 ⁷ / ₁₆	3⅜	3	3 ¹⁵ / ₁₆	3 ⁷ / ₁₆	4 ¹⁵ / ₁₆	2 ⁷ / ₈	4¾	3¾	5 ⁷ / ₁₆	4 ⁷ / ₁₆	
B Bore Length	1	1⅛	1⅛	1¼	1⅜	1⅝	1⅝	1⅞	2						
C Bore Dia.	^{+0.0005} / _{-0.0000}	1 ⁵ / ₁₆	1 ¹ / ₁₆	1 ³ / ₁₆	1 ⁵ / ₁₆	1 ⁷ / ₁₆	1 ⁷ / ₁₆	1 ¹¹ / ₁₆	1 ¹³ / ₁₆						
D Hub Dia.	1 ⁷ / ₈	2⅛	2⅛	2 ³ / ₈	2 ³ / ₄	2 ⁷ / ₈	3¼	3⅞	3¾						
E Hub Length	¾	½	7 ¹ / ₁₆	9 ¹ / ₁₆	7 ¹ / ₁₆	9 ¹ / ₁₆	7 ¹ / ₁₆	9 ¹ / ₁₆	5 ⁵ / ₈						
F Apex to Back.										3½	5½	4½	6½	5 ³ / ₁₆	
G Bore Dia.										^{+0.001} / _{-0.000}	3¾	3½	5	4	
H C' bore Dia.											5 ³ / ₈	5⅞	7¼	6	
J Bolt Circle											4½	4¼	6⅞	4 ⁷ / ₈	
K Web Thick.											5 ⁵ / ₈	¾	¾	¾	
L C' bore Depth											5 ⁵ / ₈	¾	¾	1 ¹ / ₁₆	
M Bore Length											5 ¹ / ₁₆	5 ¹ / ₁₆	5 ¹ / ₁₆	5 ¹ / ₁₆	
Holes	Size										1 ³ / ₃₂	1 ³ / ₃₂	1 ⁷ / ₃₂	1 ⁷ / ₃₂	
	No.										12	12	12	12	
Keyway	1 ⁴ / ₄ x ³ / ₃₂	1 ⁴ / ₄ x ³ / ₃₂	1 ⁴ / ₄ x ³ / ₃₂	1 ⁴ / ₄ x ³ / ₃₂	¾x ¹ / ₈	¾x ¹ / ₈	¾x ¹ / ₈	¾x ¹ / ₈	1 ² / ₂ x ³ / ₁₆						
**Max. Bore	1 ³ / ₁₆	1 ⁷ / ₁₆	1 ⁹ / ₁₆	1 ¹¹ / ₁₆	2	2	2 ³ / ₈	2⅞	2¾	*	*	*	*	*	
Wt. each, lbs.	1.00	1.50	1.25	2.38	3.00	5.25	5.12	8.28	9.38	8.12	10.25	15.75	16.00	24.00	
Torque (lb. in.)	Gear	1469		2025		4324		7435		13185		23356		34959	
	Pinion	1102		1519		3243		5576		9889		17517		26219	

Note: All dimensions are in inches.

*Cannot be reworked.

**Keyway Unchanged